

Maple Glen Farm

Spectacular mountains views, river frontage, & open rolling pastures



Maple Glen is a spectacular multifaceted country property with 339 acres situated in the idyllic Graves Mill Valley at the foot of the Blue Ridge. The property rises dramatically from its long frontage on the pristine, trout filled, Rapidan River to a series of open plateaus which are ideally suited for the growing of wine grapes or the management of cattle and/or horses..

From the meadows on the plateaus the property rises to the top of the forested mountain to the east.

This centennial farm has been in the same family since Reconstruction era. In 1880 the original home was built from lumber harvested from the surrounding land and milled on this farm, at a sawmill up on the woods that is no longer there. Original millstones can still be found around the property. Two other dwellings are currently being used as rentals.

The views of the surrounding mountains and of the nearby Shenandoah National Park are overwhelmingly beautiful, as is the delightful river frontage, with the mountains as a stunning backdrop. This property and the surrounding farms and estates are protected by conservation easements which will





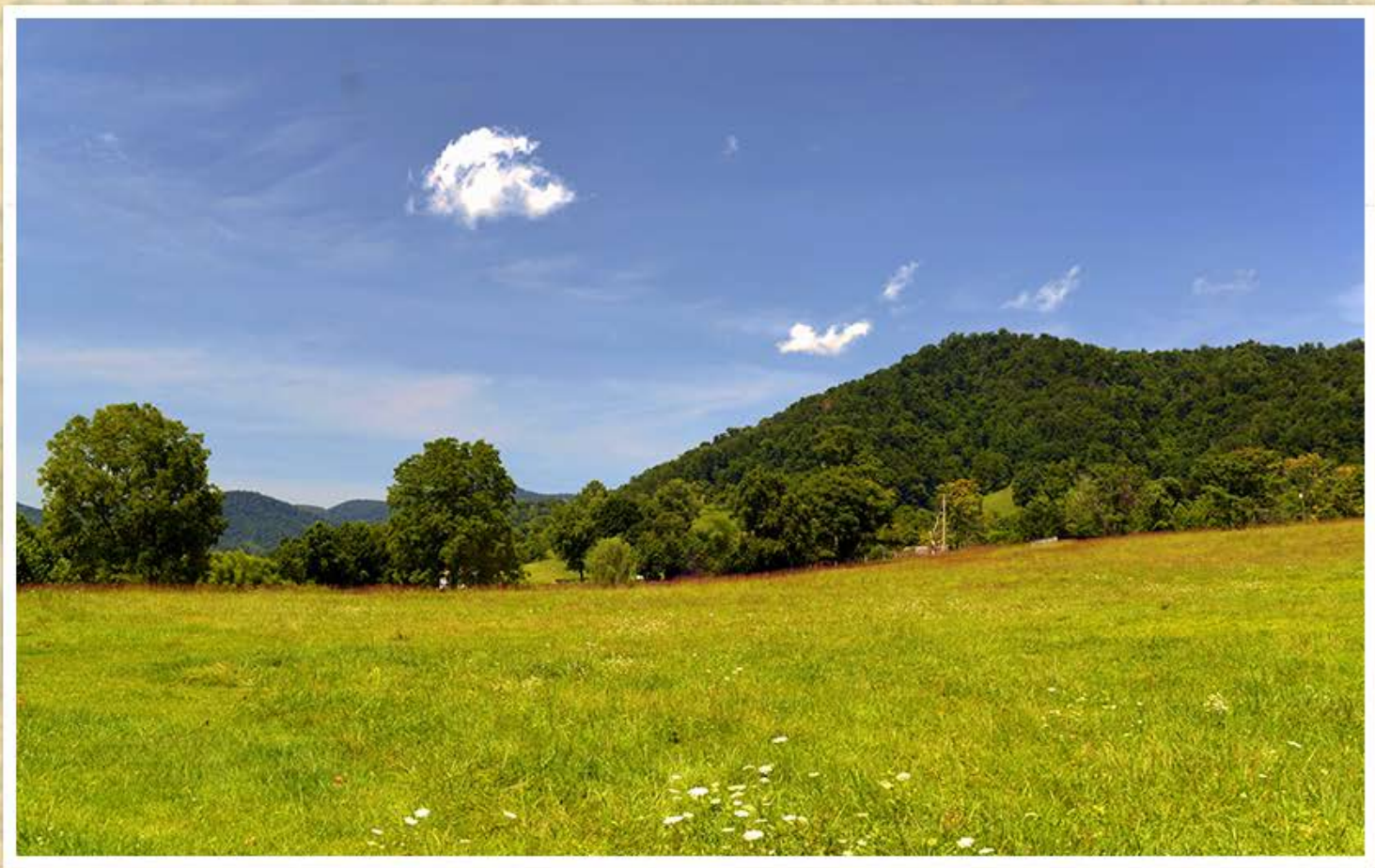


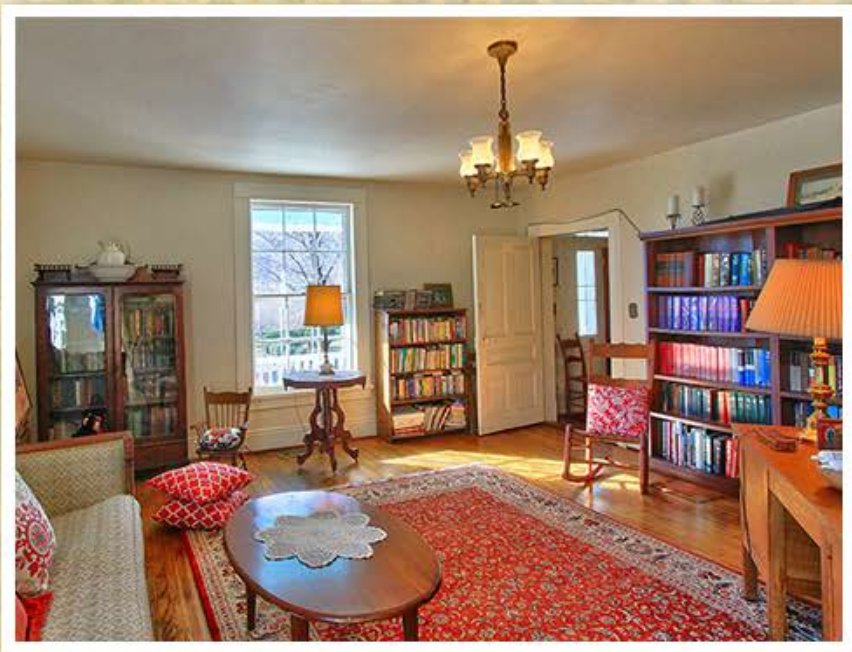


Winery Potential

The high Plateaus at Maple Glen have been certified by central Virginia's preeminent vineyard consultant, Chris Hill, as being perfectly suited for the growing of "Vitus Vinifera", or European wine grapes. The elevation, orientation, air drainage, microclimate and soils are precisely the types required for growing healthy wine grapes. If the ancient adage is true that "wine grapes only grow in beautiful places" then the wine from the grapes grown at Maple Glen will be ambrosia!







This 3740 square foot historic Virginia country home was built in 1880 and has been in the same family since that date. It is situated on a knoll high above the Rapidan River surrounded by beautiful mountain vistas. The home has the charm of classic Virginia 19th century architecture in a setting of magnificent natural beauty.



