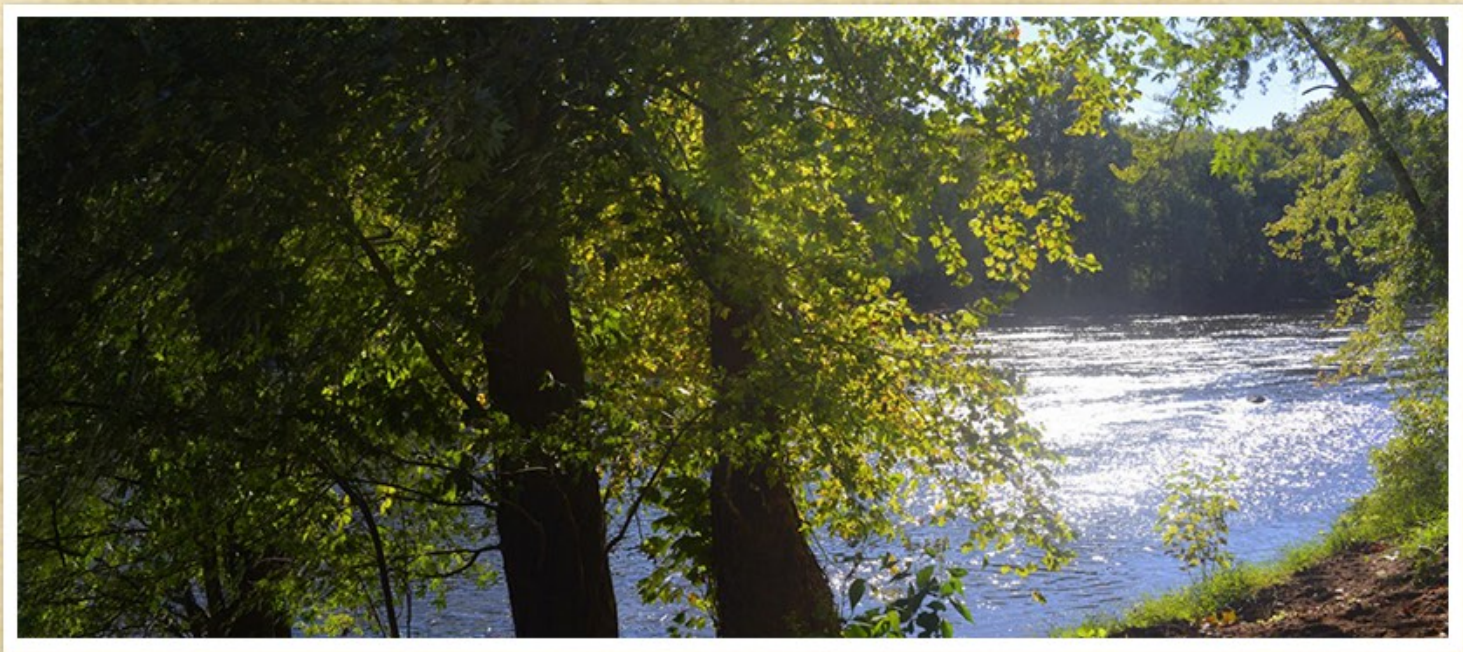


Hatton Grange Retreat

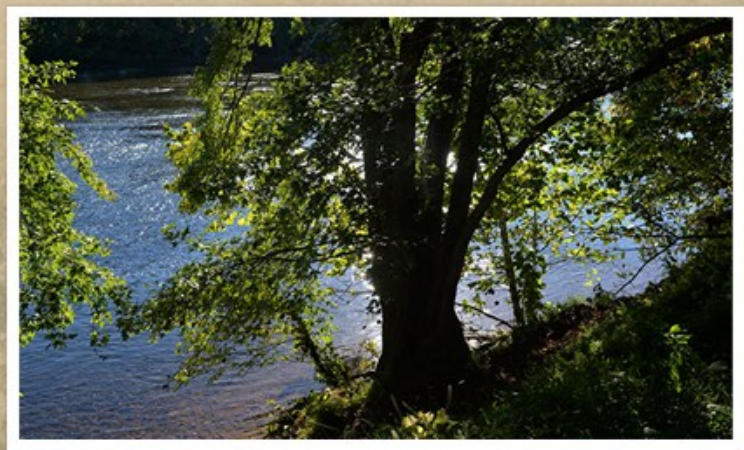
Enjoy the privacy of this secluded 50 acre parcel with long James River frontage and beautiful Blue Ridge Mountain views only three miles from the historic town of Scottsville





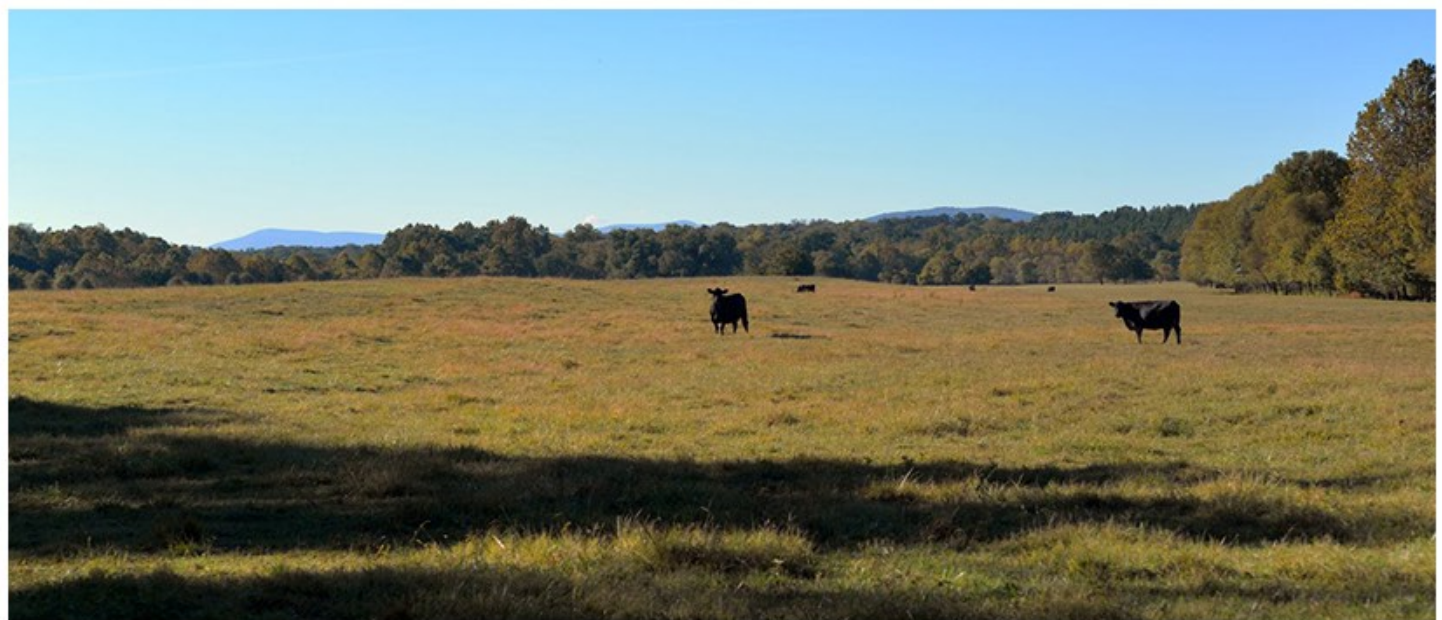
The River

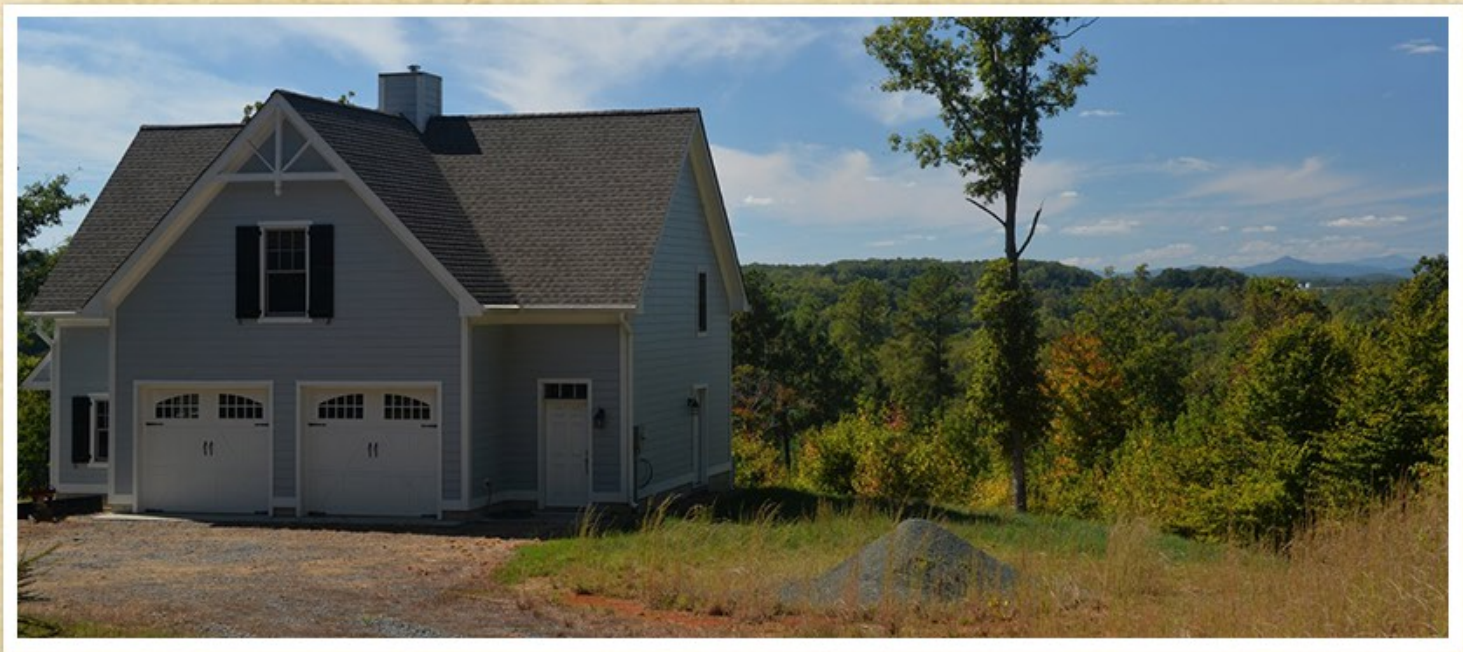
The beautiful waters of the James River flow for over one quarter mile on the southern boundary of the property. Huge sycamores line the banks which have small sandy beaches scattered along the shore. The river is an amazing source of recreation allowing for canoeing, kayaking, tubing, swimming, fishing and lolly gagging.



The Mountains

To the west a broad panorama of Blue Ridge mountain views spreads across the horizon, looking across the James River to Albemarle, Nelson and Amherst Counties. Sunsets are dazzling from the upper deck of the cottage.





The Private Home Site

The cottage and future building site are located 2000 feet from the state road on a supremely private knoll overlooking the river and the mountains. The open knoll is surrounded by hardwood forest further enhancing the privacy.



The Cottage

The cottage was sited to allow for the construction of an adjacent primary home with the same spectacular views and privacy. The cottage would serve as a wonderful place to live while building the future residence.

