

Ekholmen



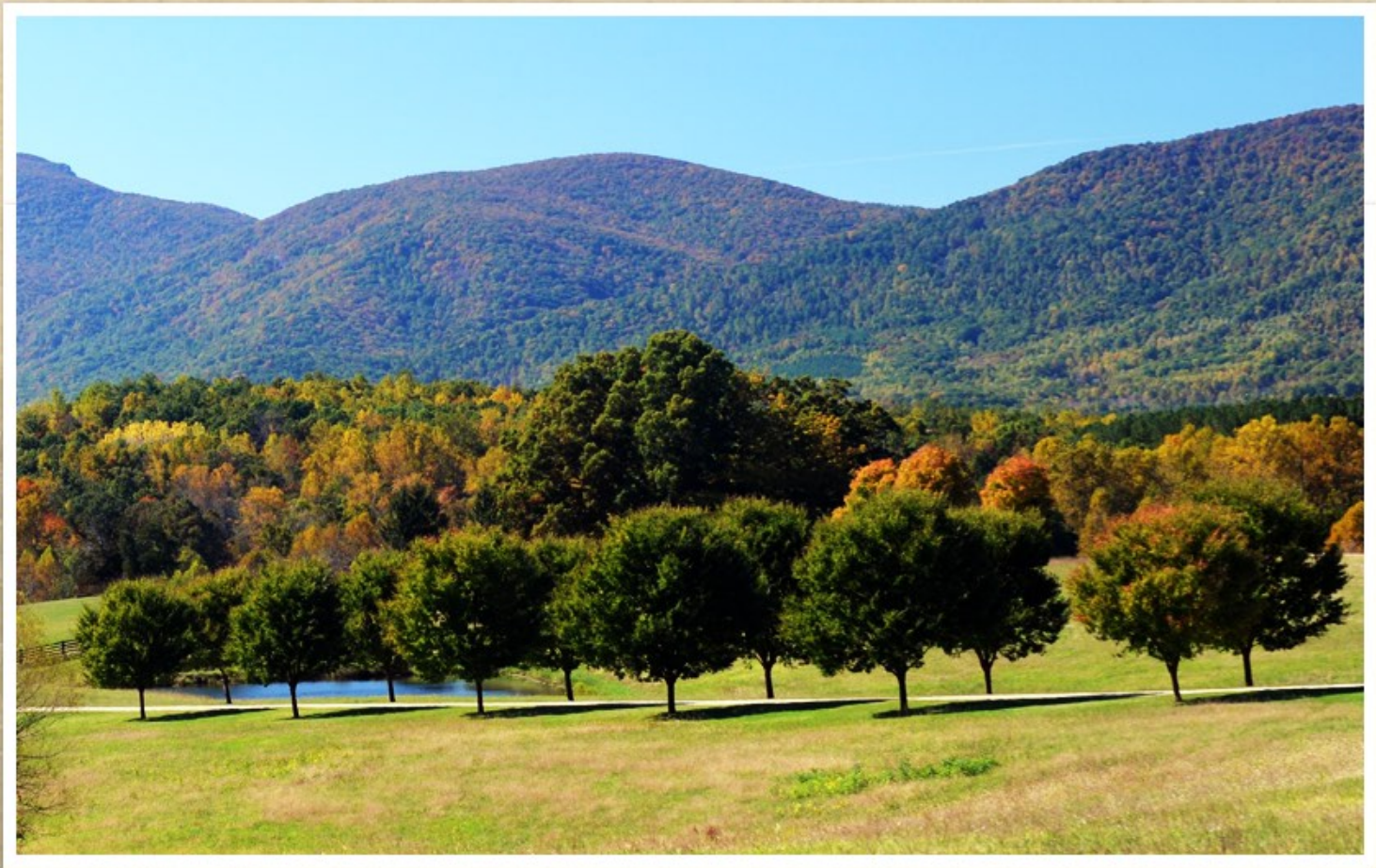
Beautiful Tuscan villa in the premier Monticello Wine Region,
nestled in and surrounded by the Blue Ridge Mountains



The Property

The land is partially wooded with open fields covering about 65 of the 165 acres. Previously there was a seven acre vineyard that yielded five grape variants for many years. The land has the ideal elevation and exposure for growing wine grapes and is located at the epicenter of Virginia's most successful high quality wineries.



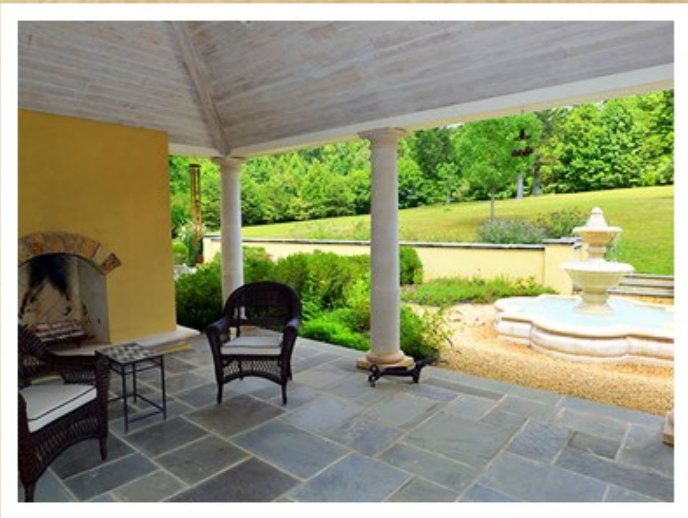


The Residence

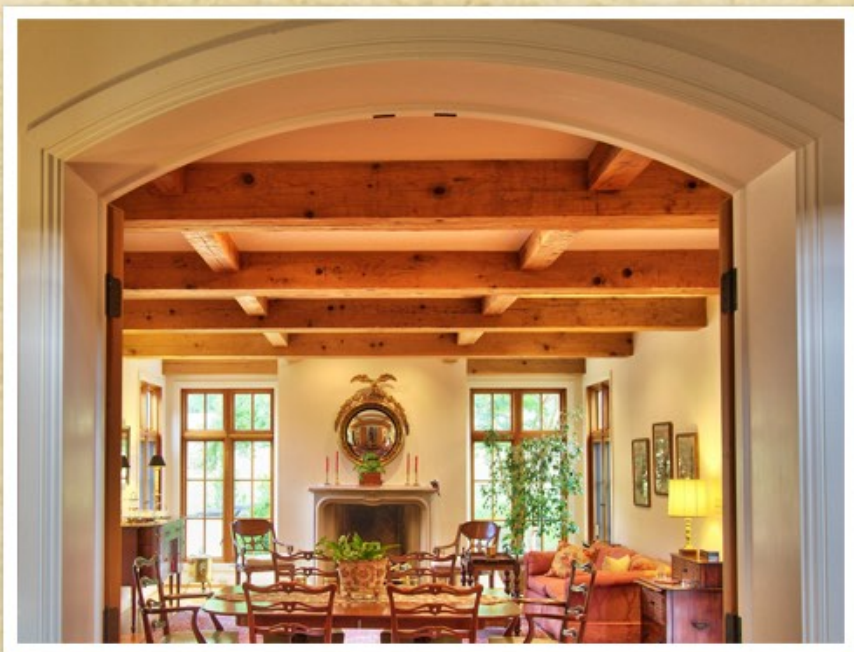
Some of the luxury amenities include 16 foot ceilings traversed by beautiful massive fir beams, three large stone fireplaces, Wolf gas range and ovens, Sub-Zero fridge, cherry cabinetry and Brazilian granite countertops, cast-iron porcelain whirlpool tub, 3 zone Geothermal system and a well with 80 gallons/minute flow rate.







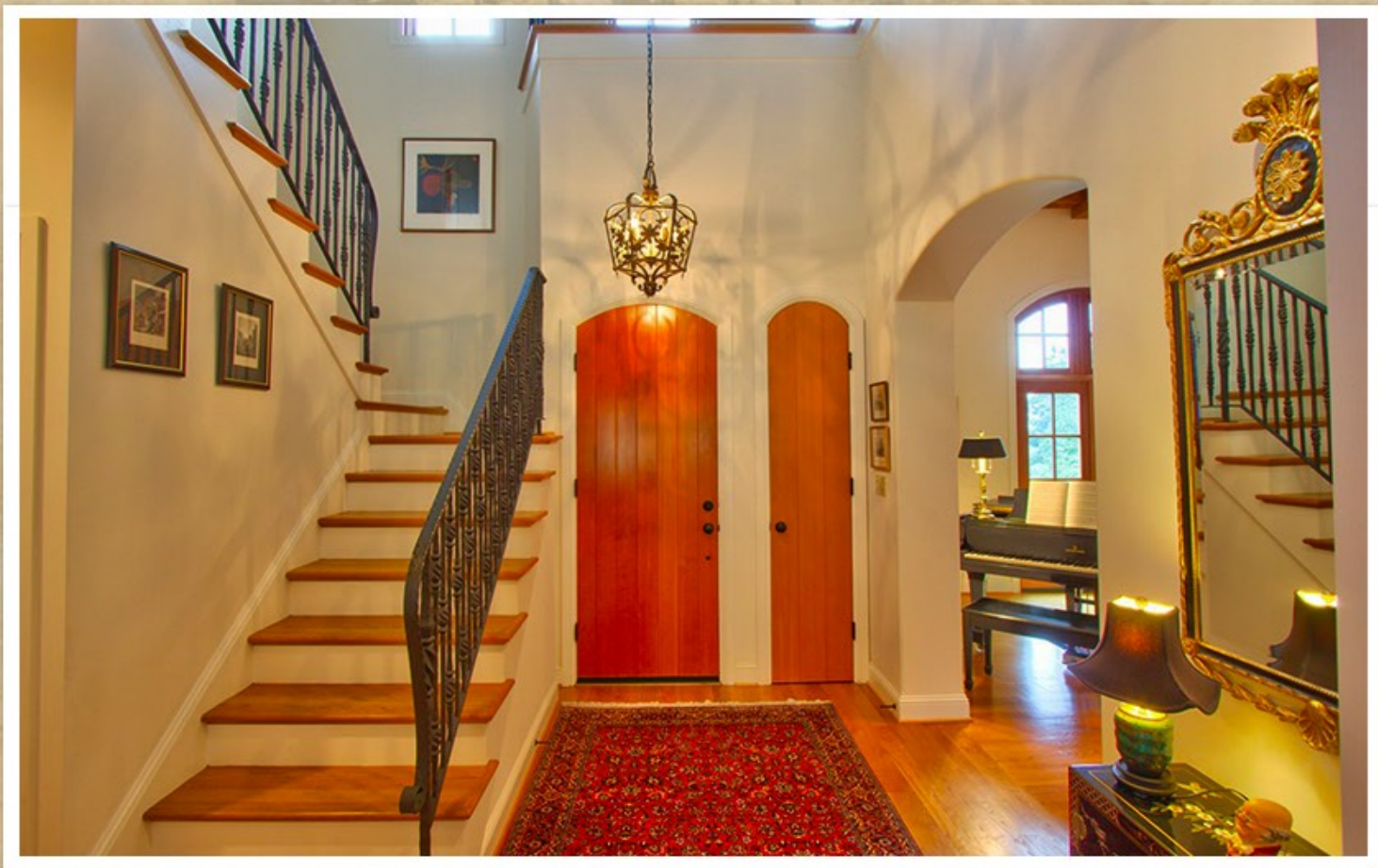
One of Virginia's finest Homes



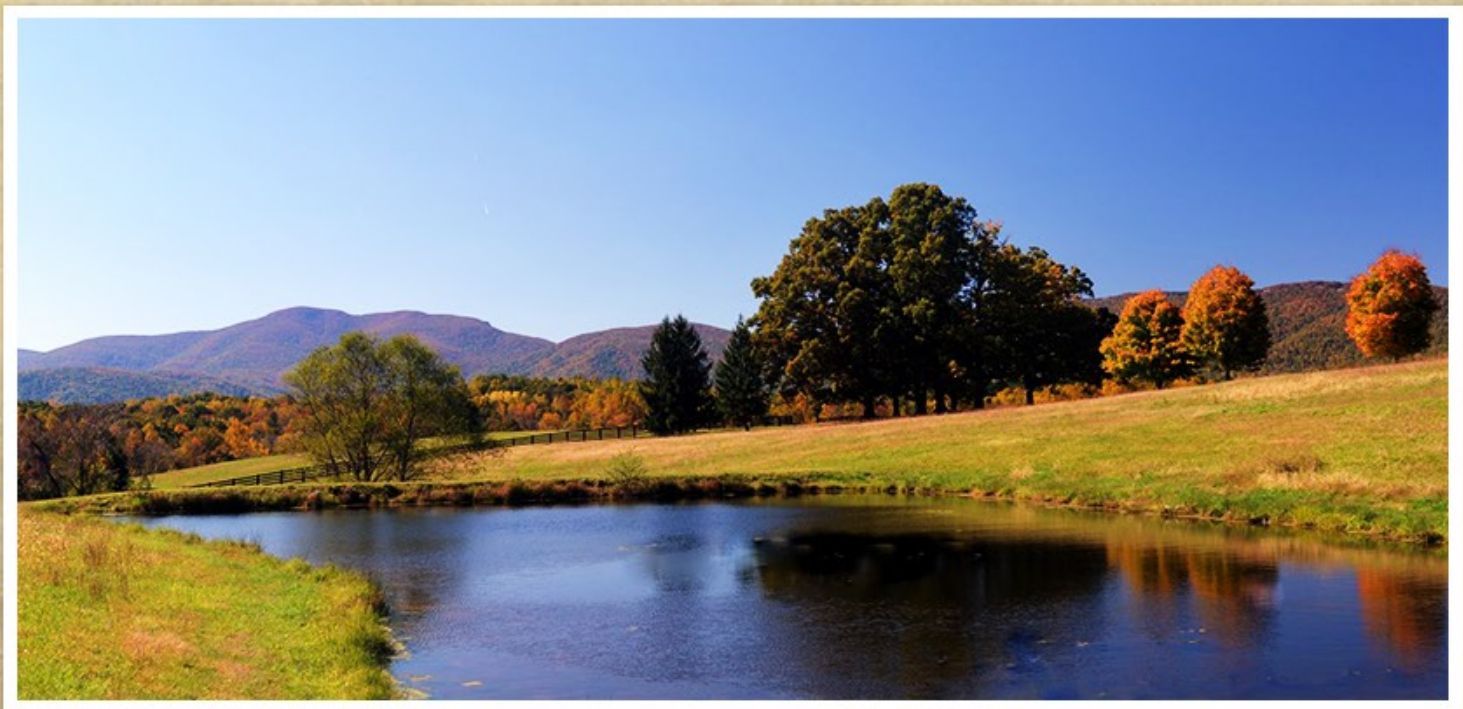
A Touch of Tuscany

The villa consists of a main floor, a second level and a lower level with several unfinished rooms. Built in 2005, the home was constructed with the most modern and high quality materials available. The exterior is meticulously landscaped and provides an ideal location for entertaining.









An Ideal Location

Ekholmen is centrally located between Charlottesville and the beautiful Shenandoah Valley. Fine dining, musical, sports and cultural events await just 20 minutes away in Charlottesville.

A five minute drive takes visitors to the incredible vistas and scenic overlooks of the Skyline Drive and the Blue Ridge Parkway.



